

ATLAS

BOOST CONTROLLER

Installation Instructions

Hellcat IHI Blower (non-Hellcat vehicle)

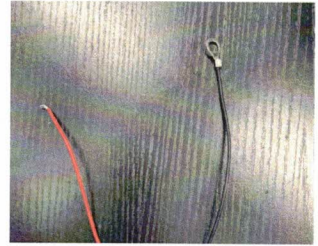
Engineered & Built by



Installation Instructions

Hellcat IHI Blower (non-Hellcat vehicle)

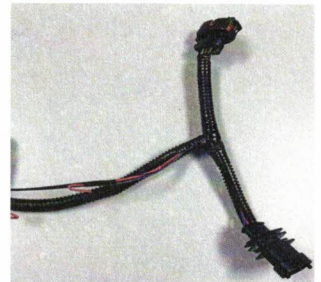
Power and Ground Wires. The power wire is attached to a key on power source. The ground will go to a good chassis ground.



Tee connector to the vehicles MAP sensor. For OEM 3 bar MAP sensor only (for OEM 2 bar or others see below). Tee connector to the vehicles MAP sensor. This will plug into the vehicles wiring harness between the MAP sensor's connector and the MAP sensor.



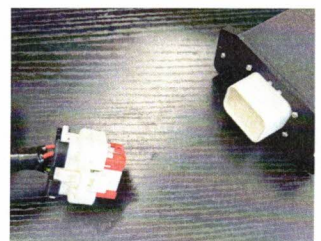
If you have a MAP sensor other than the OEM 3 bar sensor you must purchase one separately (P/N 53010887AA). You can mount the 3 bar sensor in on of the other mounting locations on the supercharger as long as its a boost port. Plug the male side into the sensor and tie off the other connector on the tee. You will need to connect the 5V signal from the Boost controller. In the harness before the tee there is a red wire that is cut. Reconnect that wire so it will send the 5V to the sensor.



FOR MAX VERSION: Boost control panel connector. This will be run inside the vehicle to the control panel. The control panel was made to sit on the shelf inside the glove box or in the cup holder for easier access.



Main Harness Connector. This will plug into the main controller box. The box can be mounted anywhere under the hood as long as it won't be exposed to high temperatures such as over an exhaust pipe. Near the under-hood fuse panel is typically a safe place.



For Max Version: The Control Panel

The control panel consists of a button, knob and two LED indicators.

The button will enable “Race Mode” when pushed and remain on until it is pushed again or the key is turned off. You will know that it is active when the red light illuminates. When this mode is activated you will have full uncontrolled boost. The boost valve will open quickly when activated and close quickly when you let off the throttle.

The knob is used to control boost pressure. When “Race Mode” is inactive it will control the boost within 1 psi of the set point. When it is fully to the left you will get little to no boost and when it is all the way to the right you will get full boost. It will control the boost up to around 10 psi.



For issues or troubleshooting - contact info@thetuningschool.com