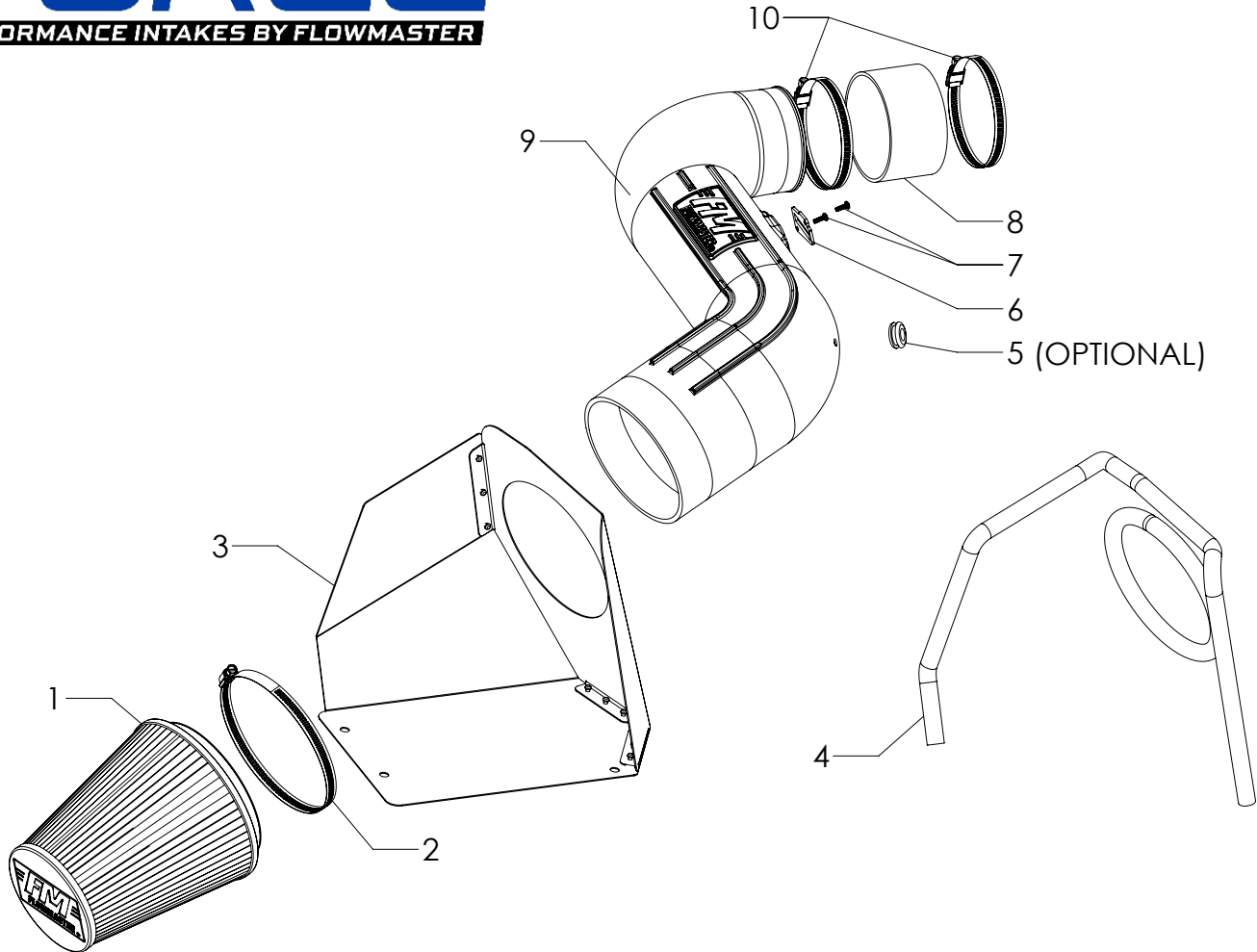




Installation Instructions for: SYSTEM # 615167

2007-2010 Chevrolet Silverado 2500 HD & 3500 HD
2007-2010 GMC Sierra 2500 HD & 3500 HD
6.6L Duramax Turbo Diesel V8 Engine

NOT LEGAL FOR SALE OR USE ON ANY POLLUTION-CONTROLLED MOTOR VEHICLE IN CALIFORNIA OR IN STATES THAT HAVE ADOPTED CALIFORNIA EMISSION PROCEDURES.



ITEM NO.	PART NUMBER	DESCRIPTION	QTY.
1	AF1001	AIR FILTER, 8-5/8" × 6" DIA	1
2		CLAMP, SCREW, #104 (4-1/8" - 7")	1
3	AF3059	HEAT SHIELD, 07-10 GM HD TRUCKS, DURAMAX, 6.6L	1
4	49000061	GASKET, HEAT SHIELD	72"
5	AF4008	GROMMET, 1-1/16" OD × 1/2" ID × 3/16" THK	1
6	GA139	GASKET, MAF SENSOR	1
7	HW248	SCREW, M4 × 0.7 × 12MM	2
8	AF4065	COUPLER, STRAIGHT 4-1/4" I.D. × 2-1/2" L	1
9	AF2059	INTAKE TUBE, 07-10 GM HD TRUCKS, DURAMAX, 6.6L	1
10	MC400H	CLAMP, SCREW, #64 (3-9/16" - 4-1/2")	2

REVIEW THE INSTRUCTIONS AND VERIFY THE KIT CONTENTS:

1. Please take a moment to read and understand these instructions before installing your Flowmaster performance air intake kit.



2. Use the parts drawing and list (front page) to verify your kit's contents.

In the unlikely event that any parts are missing, please contact Flowmaster Technical Support for replacements.

REMOVE THE FACTORY AIR INTAKE SYSTEM:

NOTES

- We highly recommend that you retain all factory air intake system parts.
 - Please refer to vehicle manufacturer's recommendations regarding removal of factory components.
 - Disconnecting the negative battery cable erases pre-programmed electronic memories. Write down all memory settings before disconnecting the negative battery cable. Some radios will require an anti-theft code to be entered after the battery is reconnected. The anti-theft code is typically supplied with your owner's manual. In the event your vehicle's anti-theft code cannot be recovered, contact an authorized dealership to obtain your vehicle's anti-theft code.
3. Turn off the vehicle's ignition and disconnect the negative battery cable. **Failure to disconnect the battery may cause the CHECK ENGINE light to illuminate after the air intake kit is installed.**



4. Disconnect the plug from the MAF sensor by depressing the locking tab and pulling the plug straight off the sensor.



5. Loosen the screw clamp that secures the inlet air duct to the turbocharger inlet.



6. Separate the inlet duct from the turbo inlet.



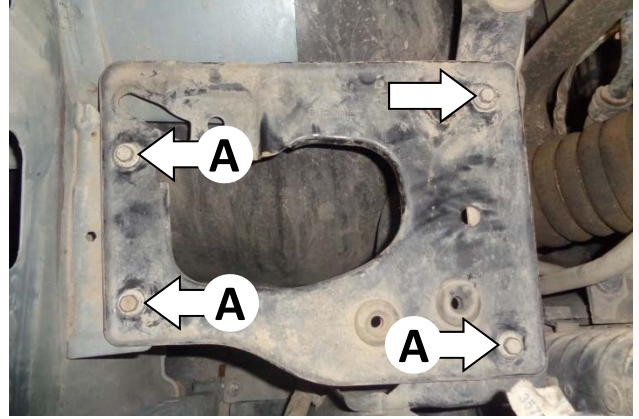
7. Remove the airbox and inlet duct from the vehicle by pulling the airbox firmly straight up to release it from its rubber grommets.



8. Remove the MAF sensor from the airbox, then remove the o-ring from the sensor. **CAUTION: The MAF sensor is delicate!** Handle it with care, and store it in a safe location until reinstallation.

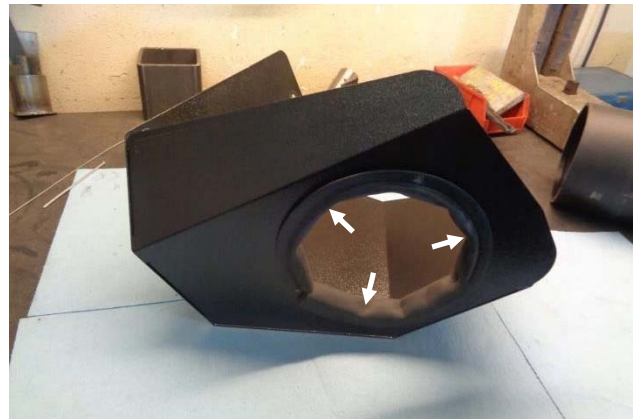


9. If your vehicle includes an air filter restriction indicator **and you intend to use it with your Flowmaster performance intake (see NOTE on page 4)**, remove it from the airbox.

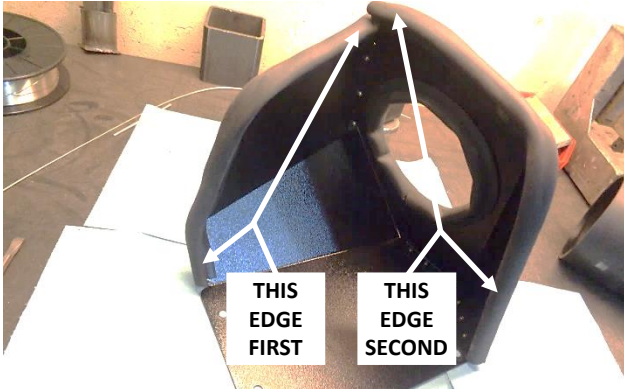


10. Remove the airbox shelf by removing its 4 mount screws. Retain the screws for later use. **NOTE: To ensure proper screw clearances at reinstallation, note the length of the screws removed from the 3 locations marked (A) above.**

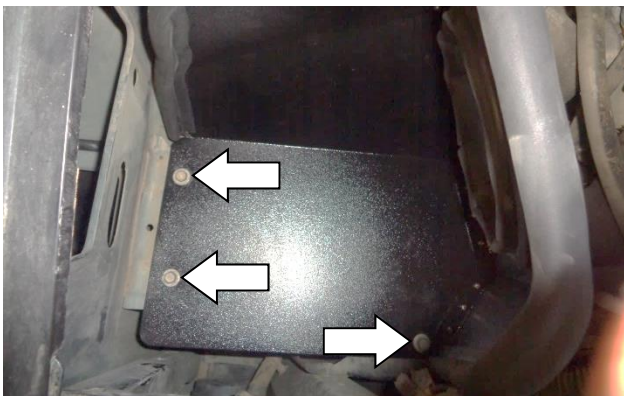
ASSEMBLE AND INSTALL YOUR FLOWMASTER PERFORMANCE AIR INTAKE SYSTEM:



11. Attach the gasket (4) to the I.D. of the heat shield (3) as shown. Firmly press the gasket onto the edge, gradually working all the way around. When you return to the starting point, use metal-cutting shears to trim the gasket to fit.



12. Attach the gasket to the two outer edges of the heat shield in the order shown. (Note that the second gasket will overlap the first at the middle corner.) Use metal-cutting shears to trim the gasket to fit.



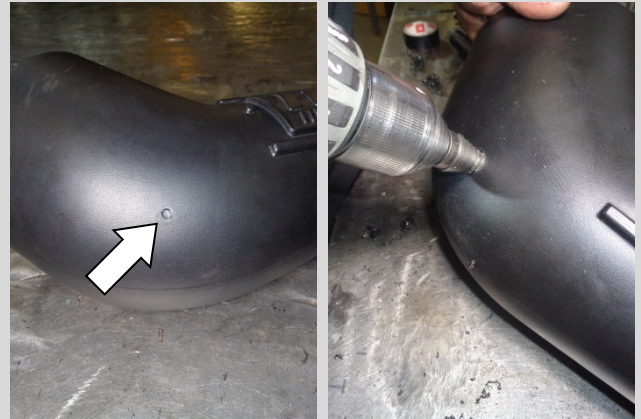
13. Use the 3 screws removed from locations (A) in Step 10 to install the heat shield in the vehicle. **NOTE: To maintain proper screw clearances, be sure to use the same length screw at each location as was removed.**

NOTE RE. AIR FILTER RESTRICTION INDICATORS:

If your vehicle's stock intake system includes an air filter restriction indicator and you want to continue using it, your Flowmaster performance intake can be modified to accept the indicator.

However, **regular maintenance of your Flowmaster filter renders the restriction indicator unnecessary.** We recommend that you clean and oil the filter at 25,000 mile intervals, using our **Filter Refresh Kit (PN 615001)**. See our website or your Flowmaster distributor for details.

Perform Steps 14-16 only if you want to modify your intake to accept the restriction indicator.



14. At the dimple in the bend of the intake tube (9), drill a 13/16" hole. **NOTE: Use of a step drill is recommended.**



15. Deburr the edge of the hole, and blow any debris out of the intake tube.



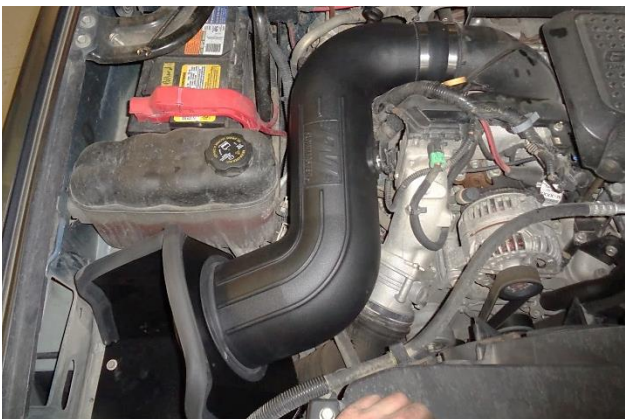
16. Insert the rubber grommet (5) into the hole. (Moistening the hole with soapy water will ease insertion.)



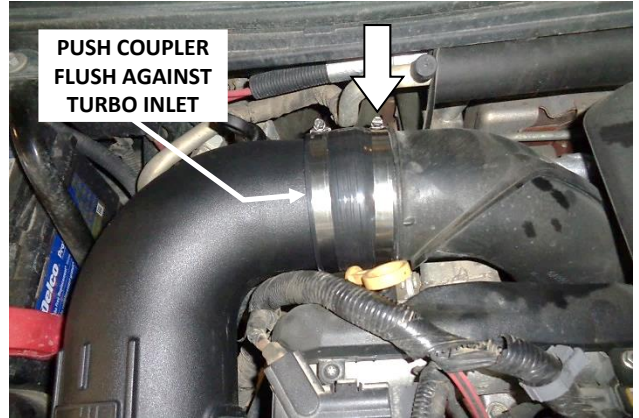
17. Slip the #64 screw clamps (10) onto the coupler (8), and install the coupler on the discharge end of the intake tube. Do not tighten the clamps at this time.



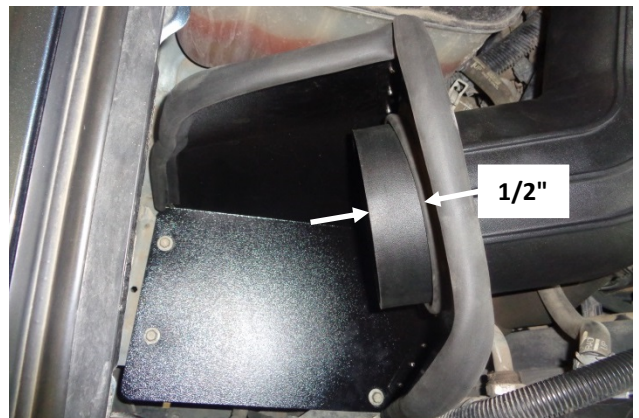
18. Install the MAF sensor gasket (6) over the sensor, then install the sensor in the intake tube, ensuring the correct orientation of the gasket and sensor to the mount pad. Secure the sensor using M4 screws (7).



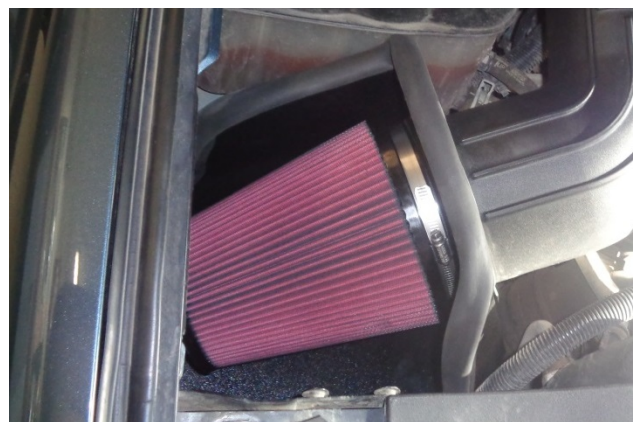
19. Slip the front end of the intake tube into the heat shield, then slip the coupler over the turbo inlet.



20. Push the coupler flush against the raised lip on the turbo inlet, then tighten the turbo inlet clamp only.



21. Align the intake tube such that it protrudes approximately 1/2" into the heat shield.



22. Place the #104 screw clamp (2) on the air filter (1), install the filter on the intake tube, and tighten the clamp.



23. Ensure that at least 1/2" of the intake tube extends inside the coupler, then tighten the clamp on the intake tube.



24. Push the MAF sensor plug onto the sensor until the locking tab clicks, then check the plug for security.



25. If you are using the filter restriction indicator, carefully push it into the grommet. (Moistening the grommet I.D. with soapy water will ease insertion.)



Congratulations, the installation of your FLOWMASTER performance air intake kit is now complete!

FILTER MAINTENANCE:

We recommend that you clean and oil your air filter at 25,000 mile intervals using **Flowmaster's Filter Refresh Kit (PN 615001)**. See our website or your Flowmaster distributor for details.

IMPORTANT: RETAIN THESE INSTRUCTIONS FOR FUTURE REFERENCE

Flowmaster maintains a highly-trained technical service department to answer your questions, provide additional product information and offer various recommendations.

Direct all correspondence and warranty questions to:

Flowmaster
100 Stony Point Rd., Suite 125
Santa Rosa, CA 95401

Flowmaster Technical Service: (707) 544-4761
Monday – Friday: 7:30 am to 5:00 pm Pacific Time
(Closed Saturday and Sunday)

