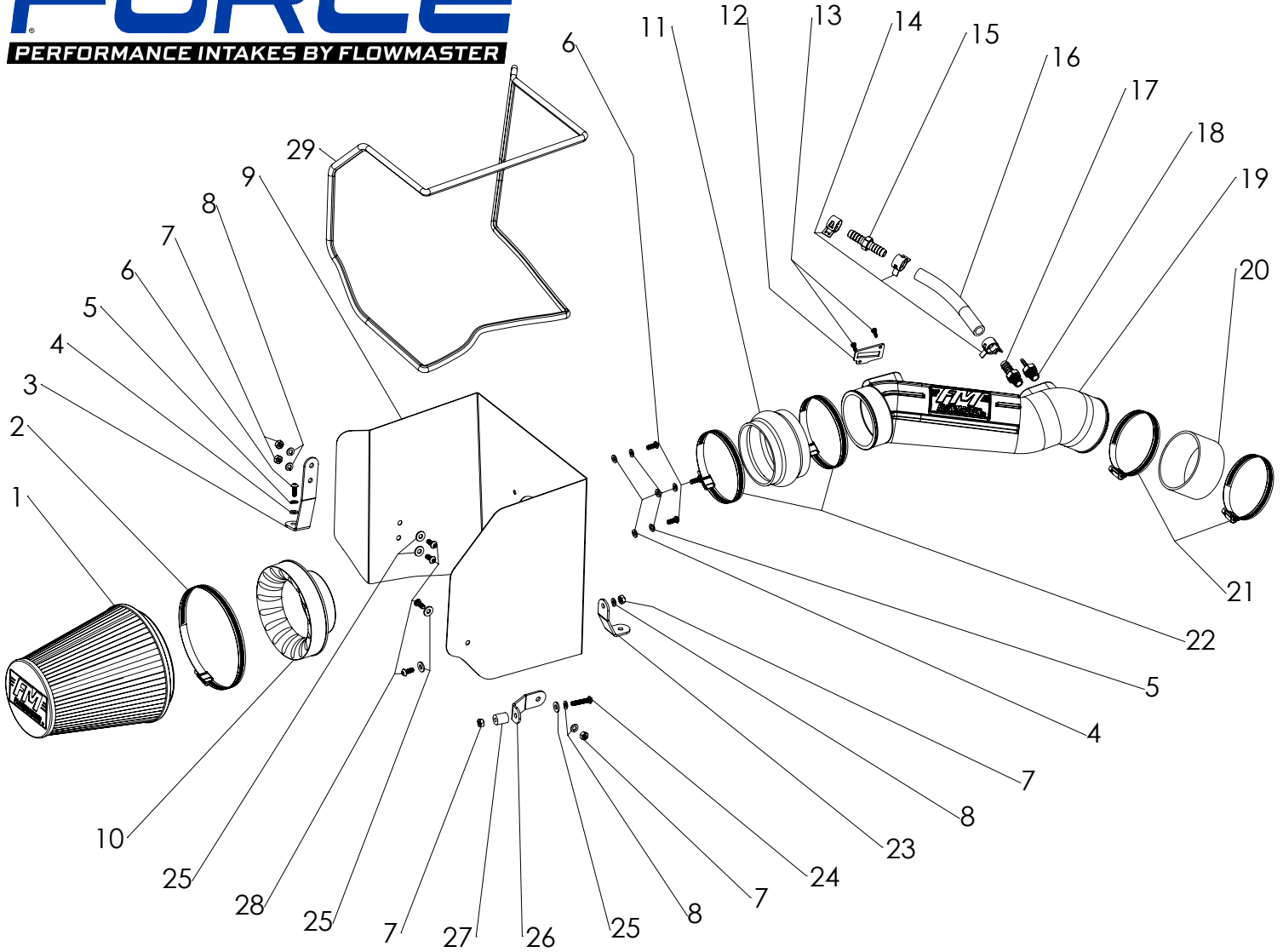




Installation Instructions for: SYSTEM # 615134

2012-2018 TUNDRA
5.7L Engine

NOT LEGAL FOR SALE OR USE ON ANY POLLUTION-CONTROLLED MOTOR VEHICLE IN CALIFORNIA OR IN STATES THAT HAVE ADOPTED CALIFORNIA EMISSION PROCEDURES.



ITEM NO.	PART NUMBER	DESCRIPTION	QTY.
1		AIR FILTER, 8-5/8" x 6" DIA	1
2	AF1001	SCREW CLAMP, #104 (4-1/8" - 7")	1
3	AF5021	BRACKET #3, 07-17 TOYOTA TUNDRA 5.7L	1
4	HW319	FLAT WASHER, M6	4
5	HW318	LOCK WASHER, M6	4
6	HW244	SCREW, M6 x 1.0 x 16MM	4
7	HW115	NUT, 1/4"-20	5
8	HW322	LOCK WASHER, 1/4"	5
9	AF3017	HEAT SHIELD, 12-17 TOYOTA TUNDRA 5.7L	1
10	AF6002	ADAPTER, AIR FILTER 4" x 6"	1
11	AF4009	COUPLER, FLEX 4" - 3-1/2" I.D. x 2-1/2" L	1
12	GA139	GASKET, MAF SENSOR	1
13	HW248	SCREW, M4 x 0.7 x 12MM	2
14	MC003P	PINCH CLAMP, 1/2" HOSE	3
15	AF4028	FITTING, STRAIGHT 1/2" BARB TO 1/2" BARB	1
16	49000064	HOSE, 1/2" I.D.	1

ITEM NO.	PART NUMBER	DESCRIPTION	QTY.
17	AF4011	FITTING, STRAIGHT 1/2" BARB TO 1/4" NPT MALE	1
18	AF4027	FITTING, STRAIGHT 3/16" BARB TO 1/4" NPT MALE	1
19	AF2010	INTAKE TUBE, 07-17 TOYOTA TUNDRA 5.7L	1
20	AF4007	COUPLER, STRAIGHT 3-1/2" I.D. x 2" L	1
21	MC350H	SCREW CLAMP, #56 (3-1/16" - 4")	2
22	MC400H	SCREW CLAMP, #64 (3-9/16" - 4-1/2")	2
23	AF5019	BRACKET #1, 07-17 TOYOTA TUNDRA 5.7L	1
24	HW251	SCREW, 1/4"-20 x 1-1/4"	1
25	HW320	FLAT WASHER, 1/4"	5
26	AF5020	BRACKET #2, 07-17 TOYOTA TUNDRA 5.7L	1
27	HW519	SPACER, NYLON, 5/8" O.D. x 1/4" I.D. x 3/4" L	1
28	HW245	SCREW, 1/4"-20 x 5/8"	4
29	49000061	GASKET, HEAT SHIELD	1

REVIEW THE INSTRUCTIONS AND VERIFY KIT CONTENTS:

1. Please take a moment to read and understand these instructions before installing your FLOWMASTER cold air intake kit.



2. Use the parts drawing and list (front page) to verify your kit's contents.

In the unlikely event that any parts are missing, please contact FLOWMASTER Technical Support for replacements.

To simplify assembly and avoid cross-threading fasteners, identify and separate the ¼-20 screws, items (24) and (28) (used with nuts (7)), and the M6 screws (6) (used with filter adapter (29) and stock nut).

REMOVE FACTORY AIR INTAKE SYSTEM:

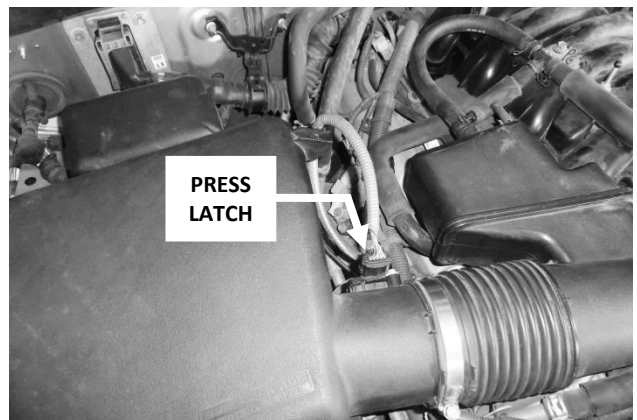
NOTES

- We highly recommend that you retain all factory air intake system parts.
- Please refer to vehicle manufacturer's recommendations regarding removal of factory components.
- Disconnecting the negative battery cable erases pre-programmed electronic memories. Write down all memory settings before disconnecting the negative battery cable. Some radios will require an anti-theft code to be entered after the battery is reconnected. The anti-theft code is typically supplied with your owner's manual. In the event your vehicle's anti-theft code cannot be recovered, contact an authorized dealership to obtain your vehicle's anti-theft code.

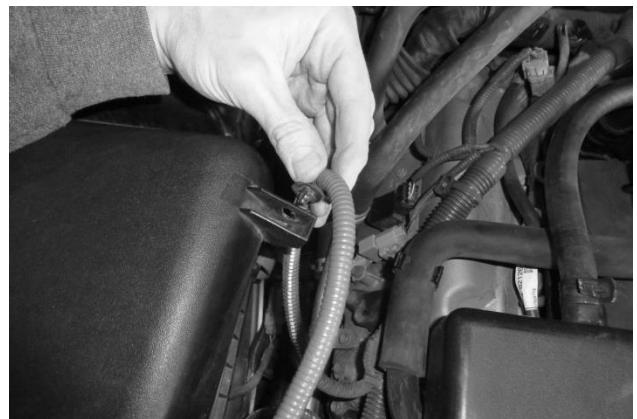
3. Turn off the vehicle's ignition and disconnect the negative battery cable.



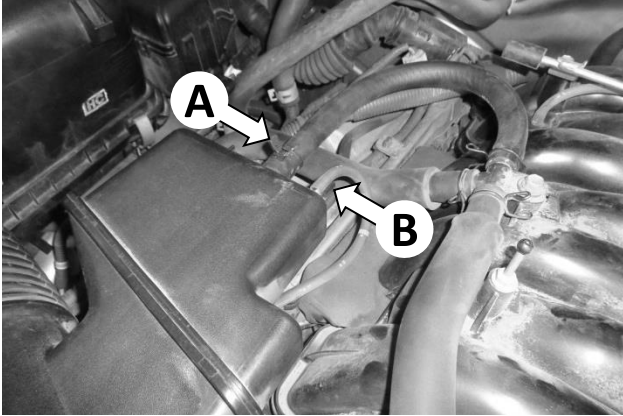
4. Engine heat shield is retained by a snap connector. Remove heat shield by lifting its front end to release the connector, then pulling forward to clear the hinge bar at the rear.



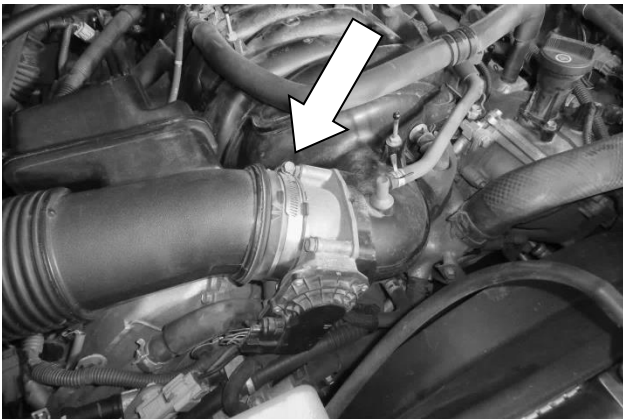
5. Carefully remove Mass Air Flow (MAF) sensor electrical connector by depressing the latch at the top rear of the plug, then pulling the connector straight off the sensor.



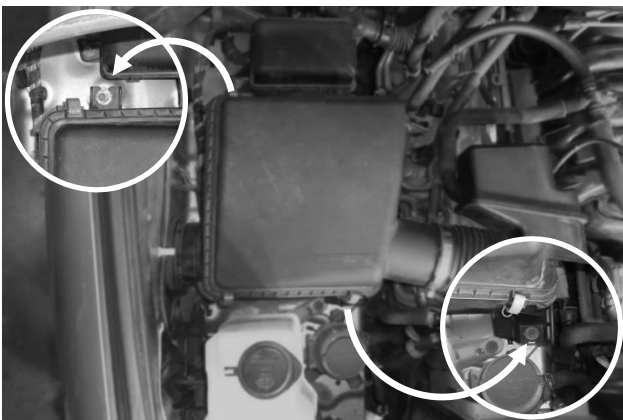
6. Disconnect the MAF sensor lead clamp from the stock airbox.



7. Disconnect PCV hose (A) and vacuum line (B) from the intake assembly.



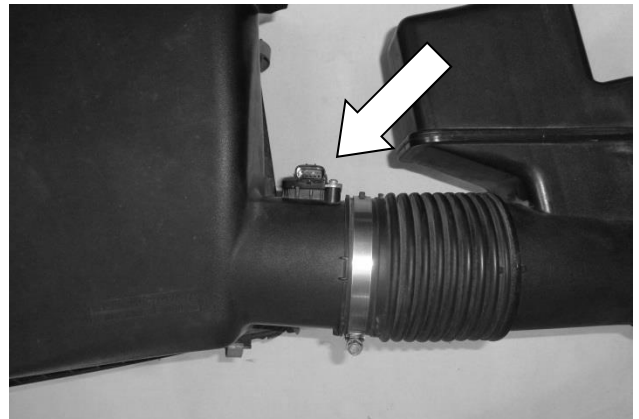
8. Loosen hose clamp securing the air intake duct to the throttle body.



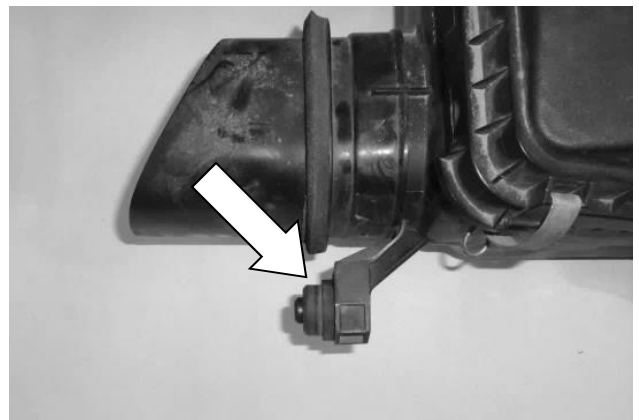
9. Remove the two airbox bolts: one at the rear outboard corner of the airbox, the other at the front inboard corner.



10. Remove the intake duct from the throttle body, then remove the assembled airbox and duct from the vehicle.



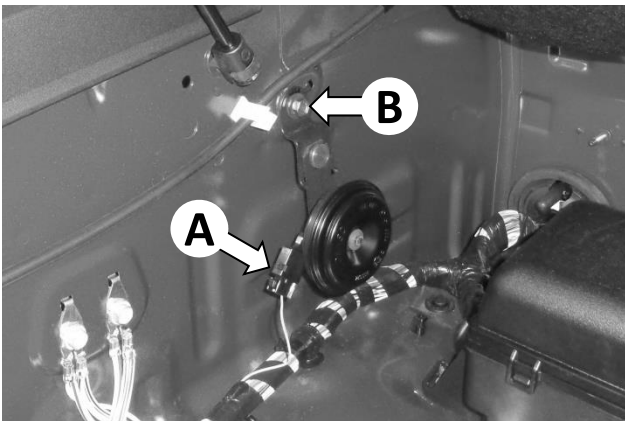
11. Remove the MAF sensor from the airbox, then remove the stock gasket from the sensor.
CAUTION: The sensor is delicate! Handle it with care, and store it in a safe location until reinstallation.



12. Remove the rubber bushing and retain for reinstallation.



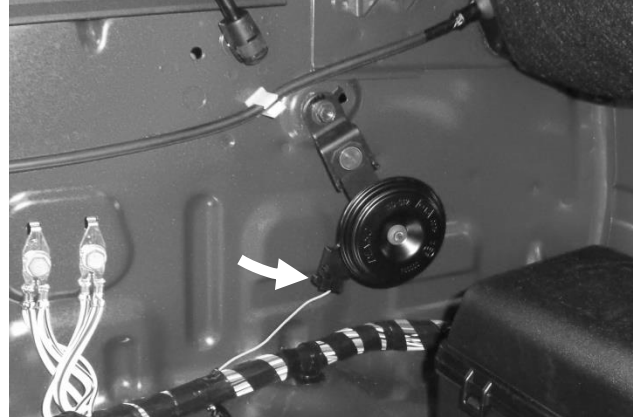
13. Remove nut from harness bracket on wheel well and retain for reinstallation.



14. Disconnect the horn connector (A), then remove the horn (at bolt B).

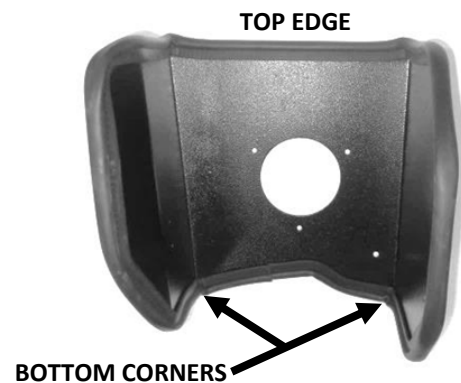


15. On the horn bracket, bend the locking lug flat.

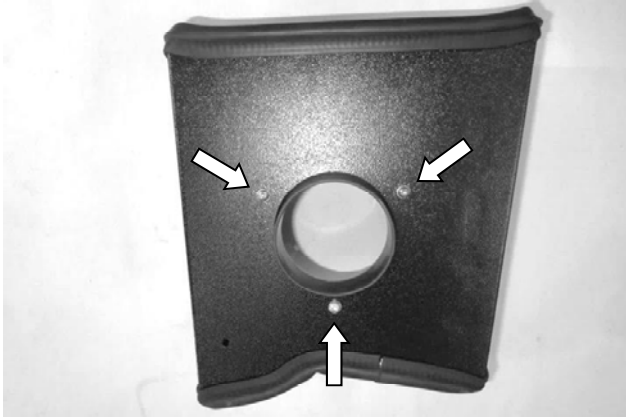


16. Reinstall the horn with the bolt finger-tight only. Reconnect the horn wire, rotate the horn slightly to the rear, then tighten the horn bolt. **CAUTION: Do not pull the horn wire tight.**

ASSEMBLE AND INSTALL YOUR FLOWMASTER COLD AIR INTAKE SYSTEM:



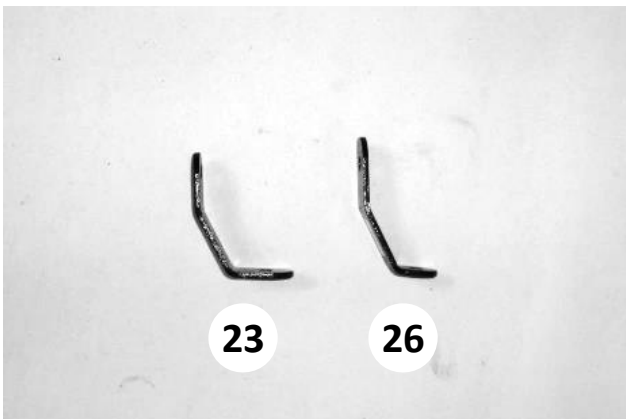
17. Attach the rubber trim seal (10) to the airbox (9). Starting at either bottom corner, firmly press the seal onto the edge, gradually working around the airbox. When you return to the corner where you started, trim seal to fit using metal-cutting shears.



18. Assemble air filter adapter (29) to airbox using M6 screws (6), lock washers (5) and flat washers (4).



19. Attach bracket (3) to airbox using $\frac{1}{4}$ -20 \times 5/8" screws (28) and flat washers (25) (against airbox), and nuts (7) and lock washers (8) (against bracket).



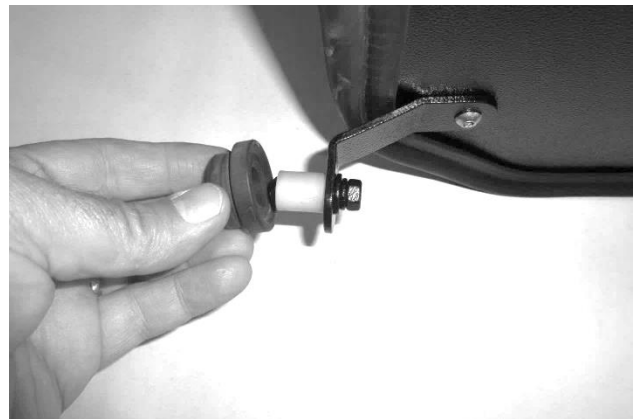
20. Identify brackets (23) and (26) as shown. Note that both bent ends of bracket (23) are approximately the same length, while one bent end of bracket (26) is longer than the other.



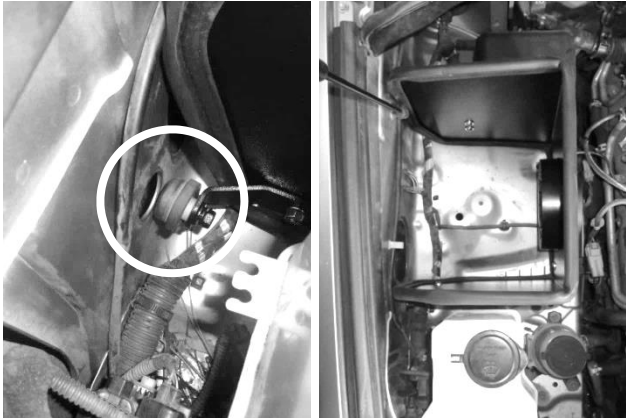
21. Attach bracket (23) to airbox using $\frac{1}{4}$ -20 \times 5/8" screw (28) and flat washer (25) (against airbox), and nut (7) and lock washer (8) (against bracket). Leave bracket slightly loose until installation of airbox.



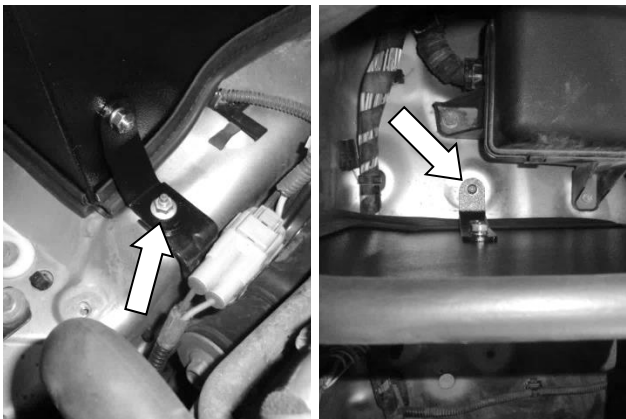
22. Attach bracket (26) to airbox using $\frac{1}{4}$ -20 \times 5/8" screw (28) and flat washer (25) (against airbox), and nut (7) and lock washer (8) (against bracket). Leave bracket slightly loose until installation of airbox.



23. Attach nylon spacer (27) to bracket using $\frac{1}{4}$ -20 \times 1 1/4" screw (24), lock washer (8) and flat washer (25) (against bracket), and nut (7) (against spacer). Install rubber bushing on spacer.



24. Set assembled airbox in vehicle, inserting the rubber bushing into its hole in the fender. If necessary, adjust alignment of brackets (23) and (26).



25. Fasten bracket (23) to vehicle with previously removed stock harness bracket nut. Fasten bracket (3) with M6 screw (6), lock washer (5), and flat washer (4). Tighten fasteners between airbox and brackets (23) and (26).



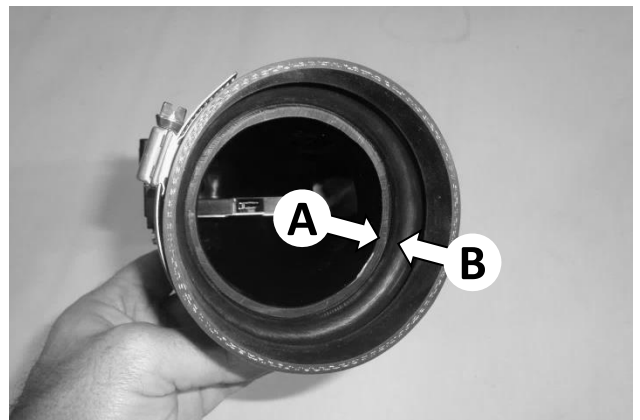
26. Apply 2 wraps of nylon thread tape to threads of barbed fittings (17) and (18), and install them in intake tube (19).



27. Install MAF sensor gasket (12) onto the sensor, ensuring correct orientation. Then install sensor in intake tube, using M4 screws (13).



28. Install two hose clamps (22) on flex coupler (11), and install coupler on intake end of intake tube. Orient clamp screws to allow tightening after installation on vehicle.



29. To allow proper flexing of the flex coupler during engine torqueing, verify that the end of the intake tube (A) sits even with, or slightly behind, the coupler's transition lip (B).



30. Install two hose clamps (21) on straight coupler (20), and install coupler on discharge end of tube. Orient clamp screws so as to allow tightening after installation on vehicle.



31. Install assembled intake tube in vehicle and tighten all hose clamps.



32. Install vacuum hose on small barbed fitting.



33. Insert barbed fitting (15) into PCV hose and secure with pinch clamp (14).



34. Install PCV hose (16) on barbed fitting and secure with pinch clamp (14).



35. Install other end of PCV hose on barbed fitting in intake tube and secure with pinch clamp (14).



36. Reinstall the connector on the MAF sensor and verify that it is secure.



38. Install engine heat shield. Place clips at rear of cover on hinge bar, then lower the cover and snap it into place on the mounting post.



37. Install clamp (2) on air filter (1), install filter on filter adapter and tighten clamp.



Congratulations, the installation of your FLOWMASTER cold air intake kit is now complete!