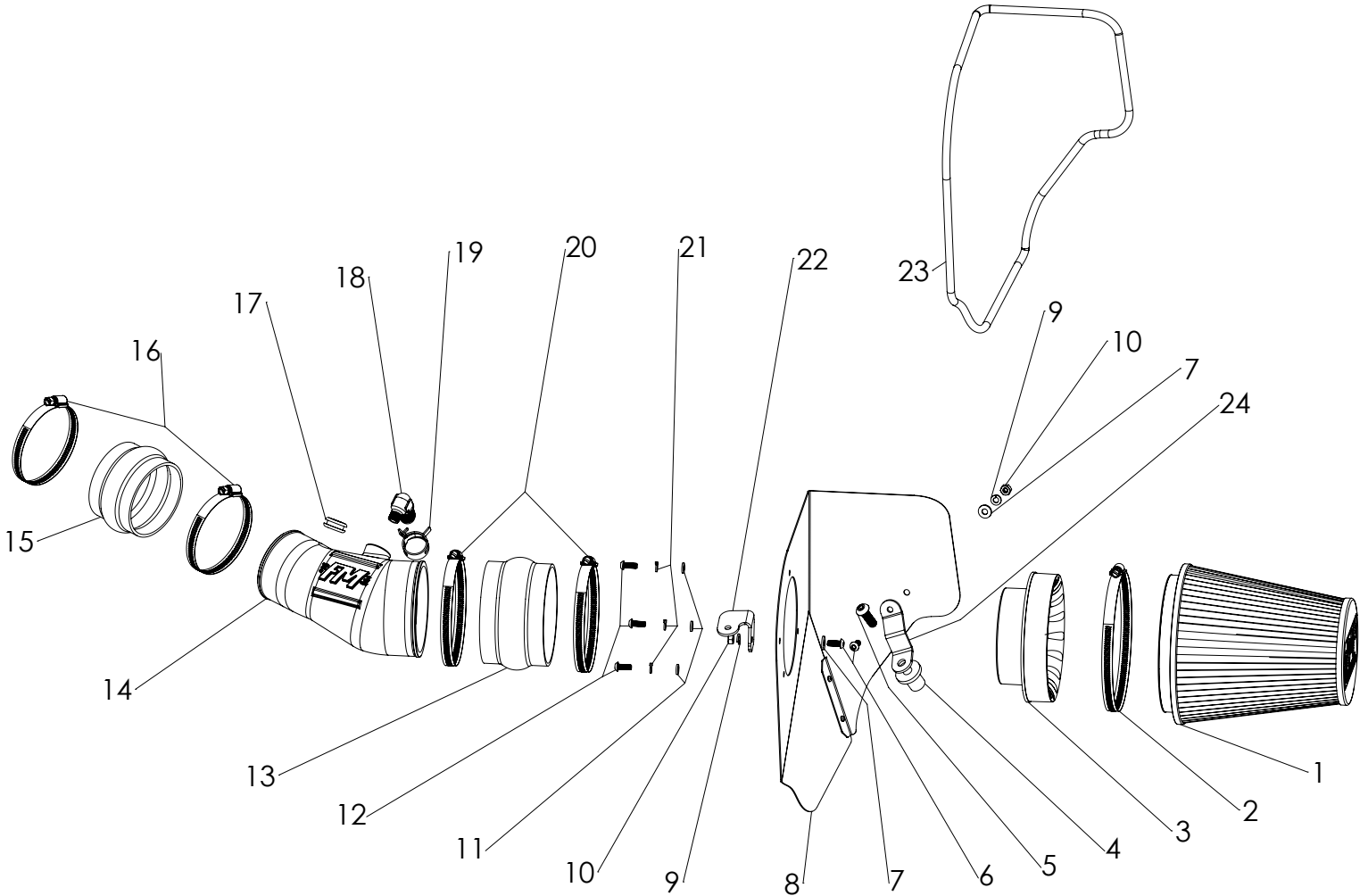




Installation Instructions for: SYSTEM # 615108

2011-2018 MOPAR CARS
6.4L Engine

NOT LEGAL FOR SALE OR USE ON ANY POLLUTION-CONTROLLED MOTOR VEHICLE IN CALIFORNIA OR IN STATES THAT HAVE ADOPTED CALIFORNIA EMISSION PROCEDURES.



ITEM NO.	PART NUMBER	DESCRIPTION	QTY.
1	AF1001	FILTER, AIR 8.625" HIGH, Ø6" FLANGE	1
2		#104 HOSE CLAMP Ø4.125 TO 7"	1
3	AF6003	4.50" TO 6.00" AIR FILTER ADAPTER	1
4	HW119	NUT, BRASS RIVET 3/4" OD RUBBER INSULATED	1
5	HW250	3/8"-16 X 1.125" BTNHD SS	1
6	HW245	1/4"-20 X 5/8" BTNHD SS	2
7	HW320	1/4" FLAT WASHER SAE SS	2
8	AF3008	HEAT SHIELD, 11-16 MOPAR CARS 6.4L SRT	1
9	HW322	1/4" SPLIT LOCK WASHER SS	2
10	HW115	1/4"-20 NUT SS	2
11	HW319	M6 FLAT WASHER SS	3
12	HW244	M6 X 1.0 X 16MM BTNHD SS	3

ITEM NO.	PART NUMBER	DESCRIPTION	QTY.
13	AF4021	4.5"ID X 3"L RUBBER COUPLER, HUMP	1
14	AF2017	MOLDED INTAKE TUBE, 11-16 MOPAR CARS, 6.4L	1
15	AF4019	3.5"ID X 2.5"L RUBBER COUPLER, HUMP	1
16	MC350H	#56 HOSE CLAMP Ø3 1/16 TO 4"	2
17	AF4008	GROMMET, RUBBER 1.06"OD X 1/2"ID X 7/16"THK	1
18	AF4014	3/4" BARB TO 1/4" NPT MALE 90DEG	1
19	MC005P	3/4" HOSE PINCH CLAMP	1
20	MC450H	#72 HOSE CLAMP Ø3 TO 5"	2
21	HW318	M6 SPLIT LOCK WASHER SS	3
22	AF5016	BRACKET 1, 2017, DODGE CARS, 6.2L	1
23	49000061	HEAT SHIELD BRACKET	1
24	AF5017	BRACKET 2, 2017, DODGE CARS, 6.2L	1

REVIEW THE INSTRUCTIONS AND VERIFY KIT CONTENTS:

1. Please take a moment to read and understand these instructions before installing your Flowmaster cold air intake kit.



2. Use the parts drawing and list (front page) to verify your kit's contents.

In the unlikely event that any parts are missing, please contact FLOWMASTER Technical Support for replacements.

To simplify assembly and avoid cross-threading fasteners, identify and separate the 1/4-20 screws, item (6) (used with nuts (10)), and the M6 screws (12) (used with filter adapter (3)).

REMOVE FACTORY AIR INTAKE SYSTEM:

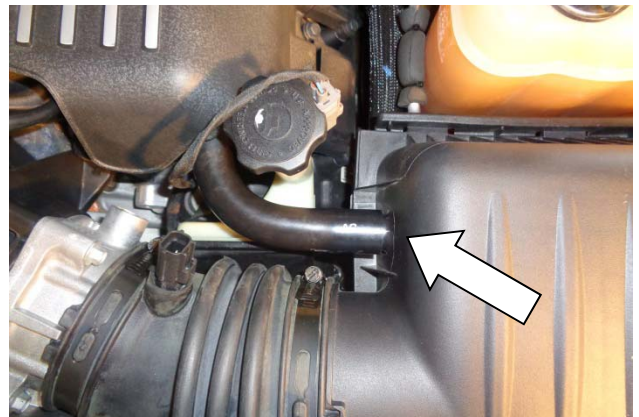
NOTES

- We highly recommend that you retain all factory air intake system parts.
- Please refer to vehicle manufacturer's recommendations regarding removal of factory components.
- Disconnecting the negative battery cable erases pre-programmed electronic memories. Write down all memory settings before disconnecting the negative battery cable. Some radios will require an anti-theft code to be entered after the battery is reconnected. The anti-theft code is typically supplied with your owner's manual. In the event your vehicle's anti-theft code cannot be recovered, contact an authorized dealership to obtain your vehicle's anti-theft code.

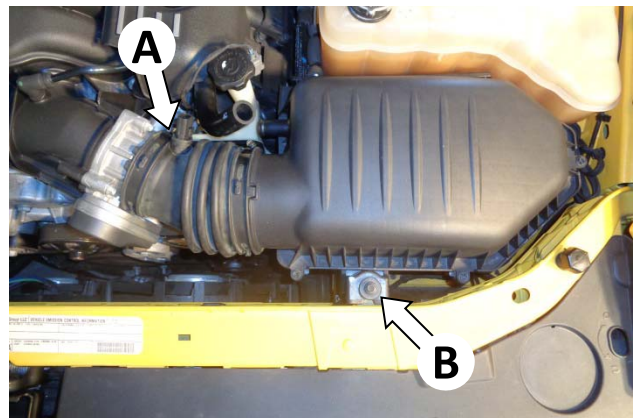
3. Turn off the vehicle's ignition and disconnect the negative battery cable.



4. Carefully remove air intake temperature sensor electrical connector.



5. Disconnect PCV hose from airbox.



6. Loosen hose clamp (A) securing the air inlet duct to the throttle body. Remove airbox mount bolt (B) (retain for installation at Step 13). Then carefully remove assembled airbox and inlet duct from vehicle.



7. The air inlet temperature sensor is retained in the intake duct by friction. Firmly grasp it and, while pulling it away from the duct, carefully wiggle it around. After removing the sensor, remove its O-ring. **CAUTION: The sensor is delicate!** Handle with care, and store in a safe location until reinstallation.

ASSEMBLE AND INSTALL YOUR FLOWMASTER COLD AIR INTAKE SYSTEM:



8. Attach gasket (23) to heat shield (8). Starting at the corner shown, firmly press the gasket onto the edge, gradually working around the heat shield. When you return to the starting point, trim the gasket to fit using metal-cutting shears.



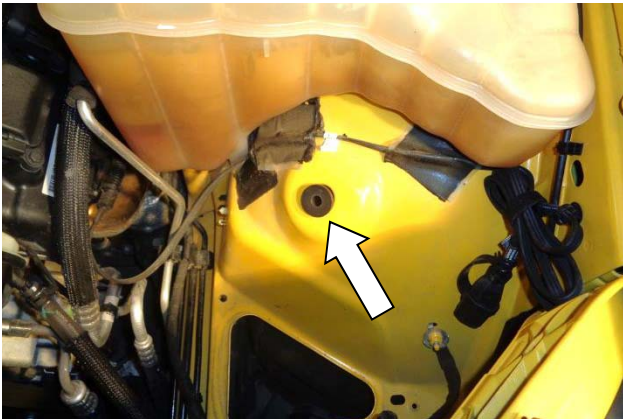
9. Attach bracket (24) to heat shield at the location shown, using ¼-20 screw (6) (against the bracket), and flat washer (7), lock washer (9) and nut (10) (against the heat shield). **NOTE: Align tab on bracket with edge of heat shield, as shown.**



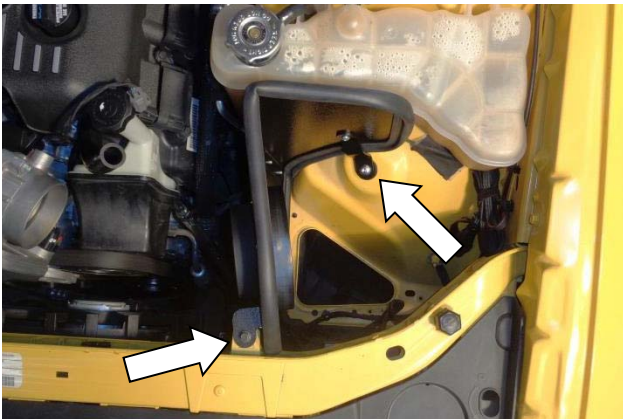
10. Attach bracket (22) to heat shield at the location shown, using nut (10) and lock washer (9) (against the bracket) and ¼-20 screw (6) and flat washer (7) (against the heat shield). **NOTE: Orient bracket so that tab is parallel to top edge of heat shield, as shown.**



11. Assemble air filter adapter (3) to heat shield using M6 screws (12), lock washers (21) and flat washers (11).



12. Insert rubber rivet nut (4) in hole in wheel well.



13. Place assembled heat shield in the vehicle. Adjust alignment of brackets if required. Secure bracket (22) with stock bolt (**removed at Step 6**), and secure bracket (24) with $\frac{3}{8}$ -16 screw (5).



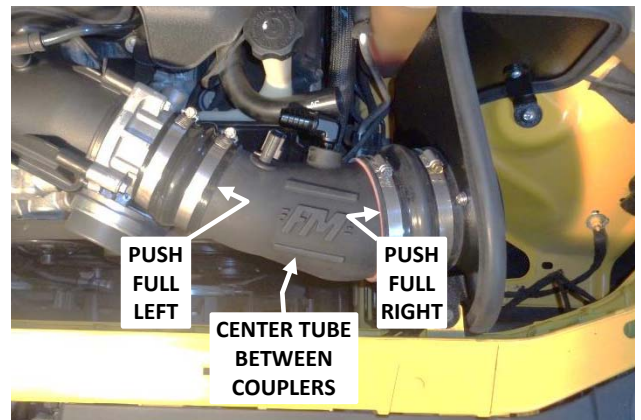
14. Install rubber grommet (17) in intake tube (14). Apply 2 wraps of nylon thread tape to threads of barbed elbow (18), and install elbow in tube.



15. Install two small hose clamps (16) on small flex coupler (15), and install coupler on discharge end of intake tube. Install two large hose clamps (20) on large flex coupler (13), and install coupler on intake end of tube.



16. Carefully insert the inlet temperature sensor into the grommet, ensuring that the tab points downstream. (NOTE: Moistening the grommet with soapy water will ease insertion.)



17. Install intake tube in vehicle. Push small coupler up to raised stops on throttle body. Push large coupler up to heat shield. Then center intake tube between couplers, and tighten all hose clamps.



18. Secure PCV hose to barbed elbow with pinch clamp (19).



19. Reinstall the connector on the inlet temperature sensor and verify that the connector is secure.



20. Install clamp (2) on air filter (1), install filter on filter adapter and tighten clamp.



Congratulations, the installation of your FLOWMASTER cold air intake kit is now complete!