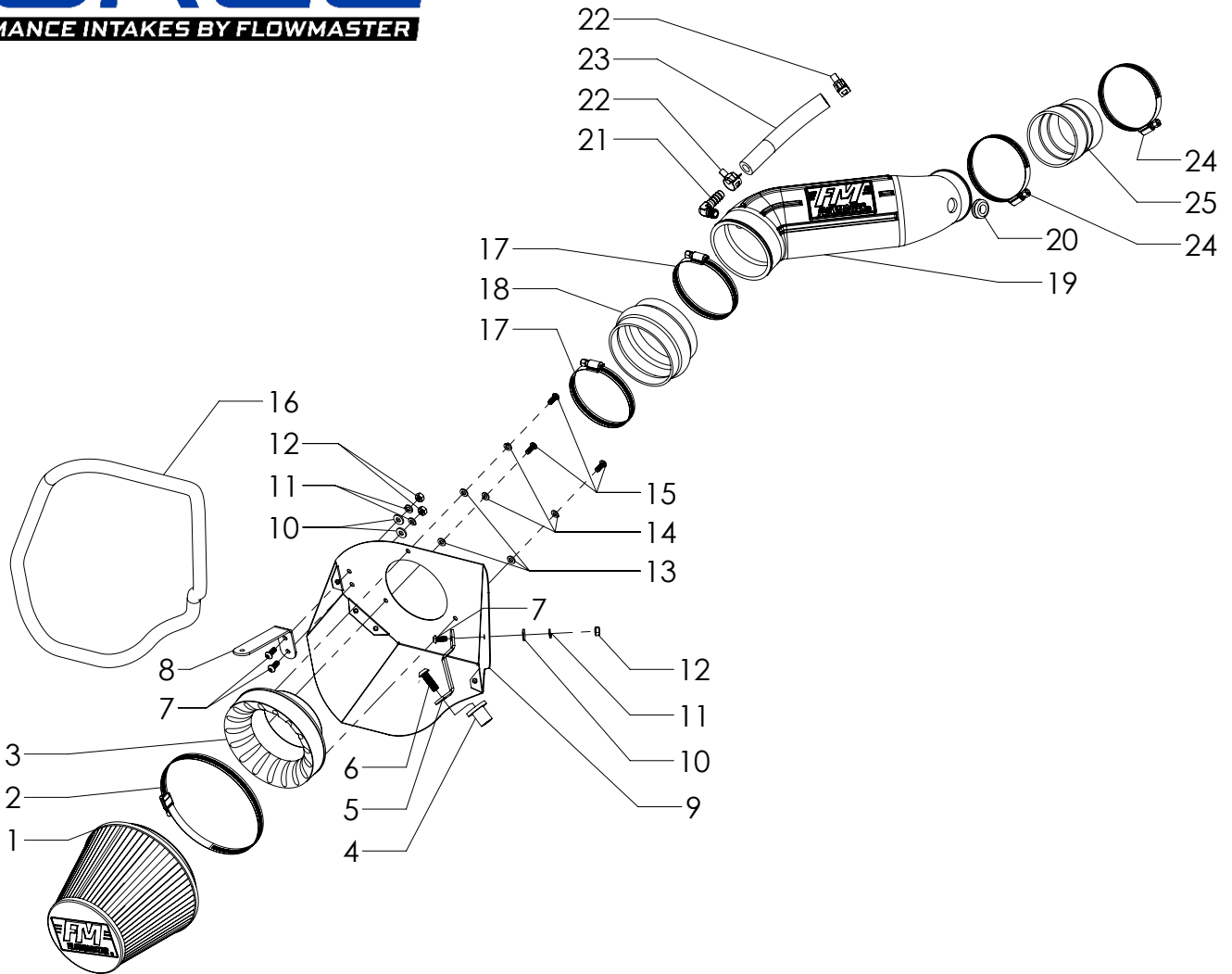




Installation Instructions for  
**SYSTEM # 615107**  
 2009-10 Dodge Challenger - 2006-10 Dodge Charger  
 2005-08 Dodge Magnum - 2005-10 Chrysler 300  
 3.5L V6 Engine

NOT LEGAL FOR SALE OR USE ON ANY POLLUTION-CONTROLLED MOTOR VEHICLE IN CALIFORNIA OR IN STATES THAT HAVE ADOPTED CALIFORNIA EMISSION PROCEDURES.



ITEM NO.	PART NUMBER	DESCRIPTION	QTY.
1	AF1003	AIR FILTER, 6-5/8" x 6" DIA	1
2		CLAMP, SCREW, #104 (4-1/8" - 7")	1
3	AF6002	ADAPTER, AIR FILTER 4" x 6"	1
4	HW119	WELL NUT, RUBBER, 3/8"-16	1
5	AF5062	BRACKET 1, 05-10 MOPAR CARS, 3.5L	1
6	HW250	3/8"-16 x 1.125" SCREW	1
7	HW245	SCREW, 1/4"-20 x 5/8"	3
8	AF5063	BRACKET 2, 05-10 MOPAR CARS, 3.5L	1
9	AF3052	HEAT SHIELD, 05-10 MOPAR CARS, 3.5L	1
10	HW320	FLAT WASHER, 1/4"	3
11	HW322	LOCK WASHER, 1/4"	3
12	HW115	NUT, 1/4"-20	3
13	HW319	FLAT WASHER, M6	3

ITEM NO.	PART NUMBER	DESCRIPTION	QTY.
14	HW318	LOCK WASHER, M6	3
15	HW244	SCREW, M6 x 1.0 x 16MM	3
16	49000061	GASKET, HEAT SHIELD	54"
17	MC350H	CLAMP, SCREW, #56 (3-1/16" - 4")	2
18	AF4051	COUPLER, FLEX 4" I.D. x 2-1/2" L	1
19	AF2052	INTAKE TUBE, 05-10 MOPAR CARS, 3.5L	1
20	AF4008	GROMMET, 1-1/16" OD x 1/2" ID x 3/16" THK	1
21	AF4012	ELBOW, 90°, 3/4" BARB TO 1/4" NPT MALE	1
22	MC003P	CLAMP, PINCH, 1/2" HOSE	2
23	49000064	HOSE, 1/2" I.D.	1
24	MC314H	CLAMP, SCREW, #52 (2-13/16" - 3-3/4")	2
25	AF4031	COUPLER, REDUCING 3" - 2-3/4" I.D. x 3" L	12"

## REVIEW THE INSTRUCTIONS AND VERIFY THE KIT CONTENTS:

1. Please take a moment to read and understand these instructions before installing your Flowmaster performance air intake kit.



2. Use the parts drawing and list (front page) to verify your kit's contents.

In the unlikely event that any parts are missing, please contact FLOWMASTER Technical Support for replacements.

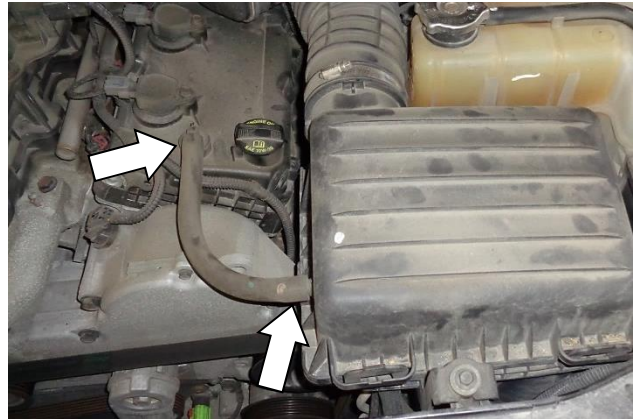
To simplify assembly and avoid cross-threading fasteners, identify and separate the ¼-20 screws (item 7) (used with nuts (12)), and the M6 screws (15) (used with filter adapter (3)).

## REMOVE THE FACTORY AIR INTAKE SYSTEM:

### NOTES

- We highly recommend that you retain all factory air intake system parts.
- Please refer to vehicle manufacturer's recommendations regarding removal of factory components.
- Disconnecting the negative battery cable erases pre-programmed electronic memories. Write down all memory settings before disconnecting the negative battery cable. Some radios will require an anti-theft code to be entered after the battery is reconnected. The anti-theft code is typically supplied with your owner's manual. In the event your vehicle's anti-theft code cannot be recovered, contact an authorized dealership to obtain your vehicle's anti-theft code.

3. Turn off the vehicle's ignition and disconnect the negative battery cable.



4. Remove the PCV hose from the vehicle.



5. Separate the wire loom from the notch on the air inlet duct.



6. Disconnect the inlet air temperature sensor plug by pulling the latch away from the sensor, then pulling the plug straight off.



7. Loosen the screw clamp at the back of the inlet air duct, then separate the duct from the throttle body.



8. Remove the mount bolt at the front of the airbox and retain for use at Step 16.

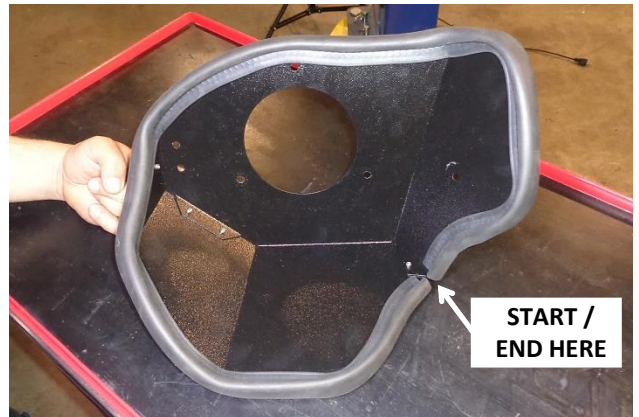


9. Remove the assembled duct and airbox from the vehicle.

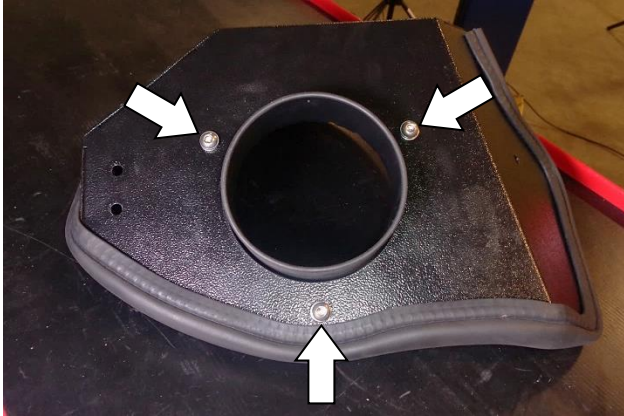


10. The air inlet temperature sensor is retained in the duct by friction. To remove the sensor from the duct, firmly grasp it and, while pulling it away from the duct, carefully wiggle it around. **CAUTION: The sensor is delicate!** Handle with care, and store in a safe location until reinstallation.

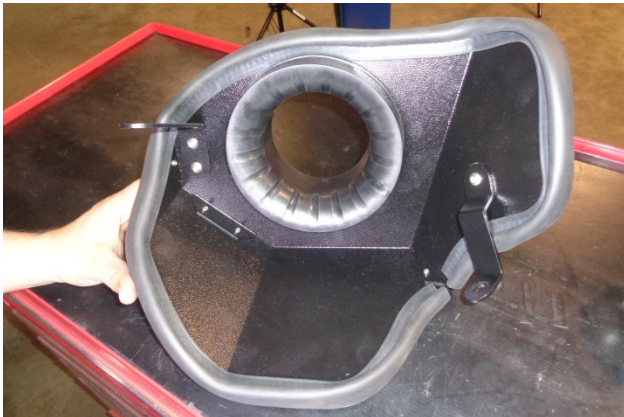
### ASSEMBLE AND INSTALL YOUR FLOWMASTER PERFORMANCE AIR INTAKE SYSTEM:



11. Starting at the corner shown, firmly press the gasket (16) onto the edge of the heat shield (9), gradually working all the way around. When you return to the starting point, trim the gasket to fit using metal-cutting shears.



12. Assemble the air filter adapter (3) to the heat shield using M6 screws (15), lock washers (14) and flat washers (13).



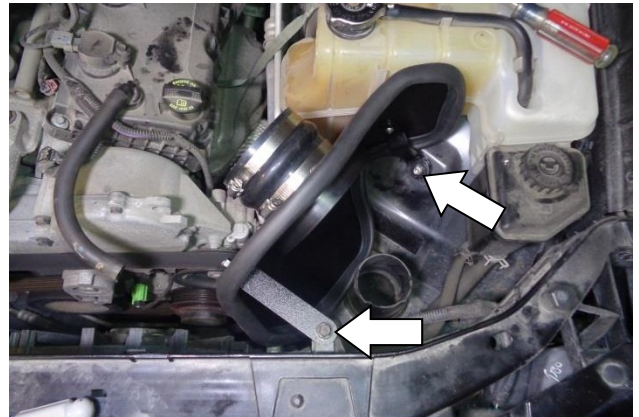
13. Attach brackets (8) and (5) to the heat shield as shown, using ¼-20 screws (7) (against the brackets) and flat washers (10), lock washers (11) nuts (12) (against the heat shield). **NOTE: Do not tighten the screw on bracket (5) at this time.**



14. At bracket (5), thread the well nut (4) onto the 3/8-16 screw (6). **NOTE: Hand tighten only at this time.**



15. Slip the #56 screw clamps (17) onto the 4" coupler (18), and install the coupler on the filter adapter. Push the coupler up against the heat shield and tighten the adapter clamp.



16. Place the assembled heat shield in the vehicle. Secure bracket (8) with the stock bolt (**removed at Step 8**), and secure bracket (5) by tightening the screw into the well nut, **then tightening its fasteners to the heat shield.**



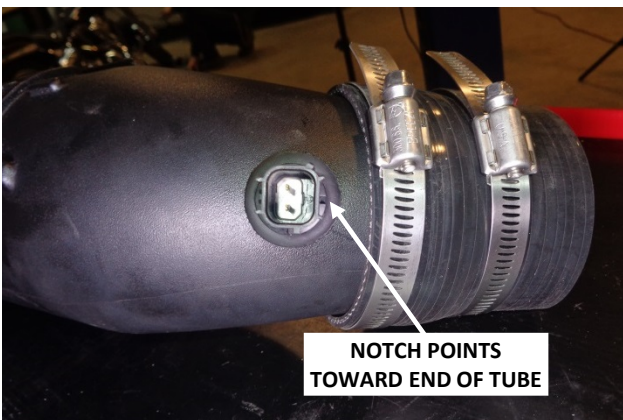
17. Apply 2 wraps of nylon thread tape to the threads of the barbed elbow (21), and install it in the intake tube (19) as shown.



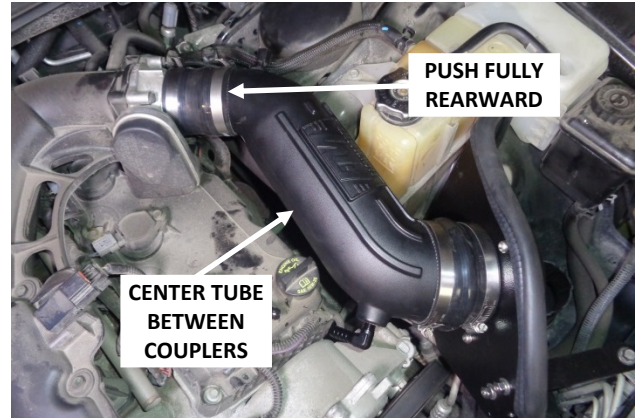
18. Insert the rubber grommet (20) into the tube. (Moistening the grommet with soapy water will ease insertion.)



19. Slip the #52 screw clamps (24) onto the reducing coupler (25), and install the large end of the coupler on the discharge end of the intake tube. Do not tighten the clamps at this time.



20. Carefully insert the air temp sensor into the grommet, so that the notch points toward the end of the tube. (Moistening the grommet I.D. with soapy water will ease insertion.)



21. Install intake tube in vehicle. Push rear coupler up against raised stops on throttle body, and tighten the throttle body clamp. Then center the intake tube between the couplers, and tighten the last two hose clamps.



22. Connect the air temp sensor plug to the sensor, close the latch, and check the plug for security.



23. Cut the 1/2" hose (23) to fit between the barbed elbow and the engine's PCV fitting. Then install the hose and secure both ends with pinch clamps (22).



24. Place screw clamp (2) on air filter (1), install the filter on the filter adapter, and tighten the clamp.



**Congratulations, the installation of your FLOWMASTER performance air intake kit is now complete!**

#### **FILTER MAINTENANCE:**

We recommend that you clean and oil your air filter at 25,000 mile intervals using **Flowmaster's Filter Refresh Kit (PN 615001)**. See our website or your Flowmaster distributor for details.

#### **IMPORTANT: RETAIN THESE INSTRUCTIONS FOR FUTURE REFERENCE**

Flowmaster maintains a highly-trained technical service department to answer your technical questions, provide additional product information and offer various recommendations.

Direct all correspondence and warranty questions to:

**Flowmaster**  
100 Stony Point Rd., Suite 125  
Santa Rosa, CA 95401

**Flowmaster Technical Service: (707) 544-4761**  
**Monday – Friday: 7:30 am to 5:00 pm Pacific Time**  
**(Closed Saturday and Sunday)**

